

PHOS  
ENGINEERING LIGHT

PANO MINI EYELID SPRING  
STANDARD

## PANO MINI EYELID SPRING - STANDARD

The Pano Mini Eyelid Spring is a recessed, fixed ceiling, in-ground and wall light with a  $\varnothing 44\text{mm}$  minimalist bezel and features a beautifully sculpted small eyelid glare shield.

### PRODUCT FEATURES

Multiple Install Applications

Fixed

Interior / Exterior

LED

IP67

Available in all Phos finishes

Interchangeable optics & accessories (pre & post install)

### PHOS STANDARDS

60min fire-certified

Acoustic-rated

UK designed, manufactured and assembled

5 year warranty

### OPTICS

Standard beam angles:  
Eyelid

### PHYSICAL PROPERTIES

Diameter  $\varnothing 44\text{mm}$

Height 44mm

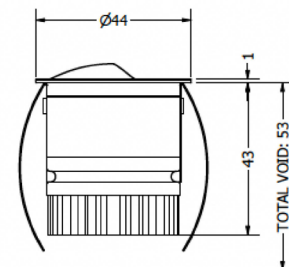
### DRIVER INFORMATION

[Driver Configurator \(Link\)](#)

### PRODUCT VIEW



### DIMENSIONS



## TECHNICAL SPECIFICATIONS

CCT	2700K	
Wattage	1W	3W
Beam Angles	Eyelid	
Luminaire Lumens (lm)	56	130
Circuit Watts (c/W)	2.6	5.6
Luminaire Efficacy (l/cW)	21	23
Luminance (Cd)	230	557
Forward Voltage (Vf)	2.78	2.97
Current (mA)	350	1050

CCT	3000K	
Wattage	1W	3W
Beam Angles	Eyelid	
Luminaire Lumens (lm)	63	157
Circuit Watts (c/W)	2.6	5.5
Luminaire Efficacy (l/cW)	24	28
Luminance (Cd)	251	643
Forward Voltage (Vf)	2.78	2.97
Current (mA)	350	1050

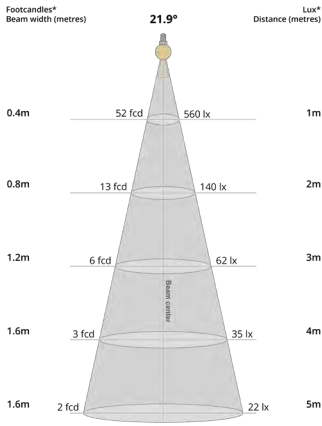
Binning	2 step MacAdams
CRI	90+
TM-30-15	Rg 96.87 Rf 91.58
Lumen Maintenance	LM80
Lifetime	50,000 hours

Dimming Options	Mains dim / Non-dim / 0-10V / DALI (dim to dark 0.01%) / Casambi
Flicker Index	0
SVM: (Visual Flicker)	0.02

Driver distance from fitting	Up to 10m (AWG 20)*
Wiring Type	Series
Accessories	Remote emergency (Maintained / Self Test)

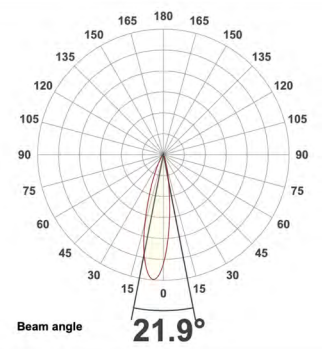
\*If driver distance from fitting is +10m see driver configurator document for guidance

## LIGHT CONES



Eyelid

## POLAR CURVES



Eyelid

## PARTCODE BUILDER

Example Code: MI-PE-S-WT-STD3-30-90-20-350

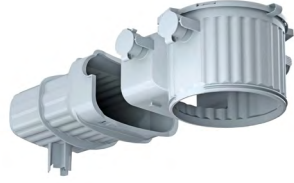
Variant	Family	Bezel Finish	Engine	Power	CCT	CRI	Beam Angle	Driver Current
<b>MI</b> Mini	<b>PE-S</b> Pano Eyelid Spring	<b>WT</b> White Textured	<b>STD</b> Standard	<b>1</b> Watts	<b>27</b> 2700K	<b>90</b>	<b>20</b>	<b>350</b>
		<b>B1</b> Anodised Black		<b>3</b> Watts	<b>30</b> 3000K			
		<b>*C</b> Custom						

\*Codes for custom finishes can be found on the page 6.

## ACCESSORIES



Pano Mini Installation Tube  
ACC-P4-TUBE



Pano Install Concrete Box  
ACC-HALOX100-190+FRONT

## FINISHES

Every element of your light can be finished in any of the options below:

### PLATED (Interior ONLY)



Antique Bronze  
01



Antique Brass  
02



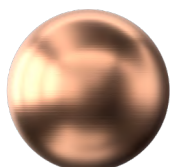
Polished Chrome  
03



Satin Nickel  
04



Polished Copper  
05

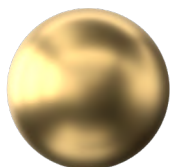


Satin Copper  
06

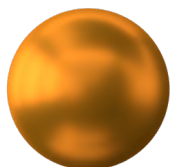


Polished Brass  
09

### ANODISED (Interior ONLY, except Orba Exteriors)



Tuba Brass  
11



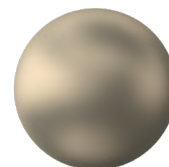
Antique Gold  
12



Espresso Bronze  
13



Cocoa Bronze  
14



Ice Gold  
15



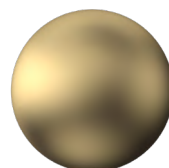
Mocha Bronze  
16



Taupe Bronze  
17



24K Gold  
18



Champagne Gold  
19



Anodised Black (9005)  
B1

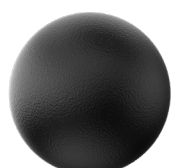
### POWDER COAT (Interior & Exterior)



Pure White (9010)  
W1



Textured White (9010)  
WT



Textured Black (9005)  
BT



RAL Classic  
[www.phos.co.uk/finishes](http://www.phos.co.uk/finishes)



RAL Design  
price on application