



PHOS  
ENGINEERING LIGHT

PANO MIDI  
STANDARD

## PANO MIDI - STANDARD

The Pano Midi is a recessed, fixed uplight or wall light with a  $\varnothing 54\text{mm}$  minimalist bezel.

### PRODUCT FEATURES

Uplight / Wall Light

Fixed

Interior / Exterior

LED

IP67

Available in all Phos finishes

Interchangeable optics & accessories (pre & post install)

### PHOS STANDARDS

60min fire-certified

Acoustic-rated

UK designed, manufactured and assembled

5 year warranty

### PRODUCT VIEW



### OPTICS

Standard beam angles:  
10° / 20° / 30° / 50°

### PHYSICAL PROPERTIES

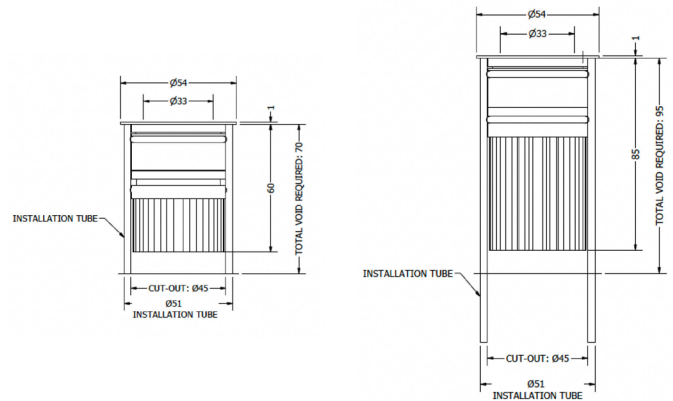
Diameter  $\varnothing 54\text{mm}$

Height 61mm (4W/9W)

Height 86mm (14W)

Cut-out  $\varnothing 45\text{mm}$

### DIMENSIONS



4W & 9W

14W

### DRIVER INFORMATION

[Driver Configurator \(Link\)](#)

## TECHNICAL SPECIFICATIONS

CCT	2700K											
Wattage	4W				9W				14W			
Beam Angles	10°	20°	30°	50°	10°	20°	30°	50°	10°	20°	30°	50°
Luminaire Lumens (lm)	320	277	266	272	511	448	440	442	695	583	571	576
Circuit Watts (c/W)	6	6	5.9	6	10.5	10.4	10.4	10.4	15.5	15.5	15.5	15.5
Luminaire Efficacy (l/cW)	53	46	45	46	49	43	42	42	45	38	37	37
Luminance (Cd)	5279	1216	680	316	8509	2006	1124	526	12064	2630	1494	696
Forward Voltage (Vf)	11.78				12.36				12.65			
Current (mA)	350				700				1050			

CCT	3000K											
Wattage	4W				9W				14W			
Beam Angles	10°	20°	30°	50°	10°	20°	30°	50°	10°	20°	30°	50°
Luminaire Lumens (lm)	353	317	305	308	593	531	510	524	824	695	693	696
Circuit Watts (c/W)	5.9	5.9	5.9	5.9	10.4	10.5	10.4	10.4	15.7	15.6	15.6	15.6
Luminaire Efficacy (l/cW)	60	54	52	52	57	51	49	50	53	44	44	44
Luminance (Cd)	5033	1408	816	373	8524	2399	1382	638	12579	3284	1957	873
Forward Voltage (Vf)	11.78				12.36				12.65			
Current (mA)	350				700				1050			

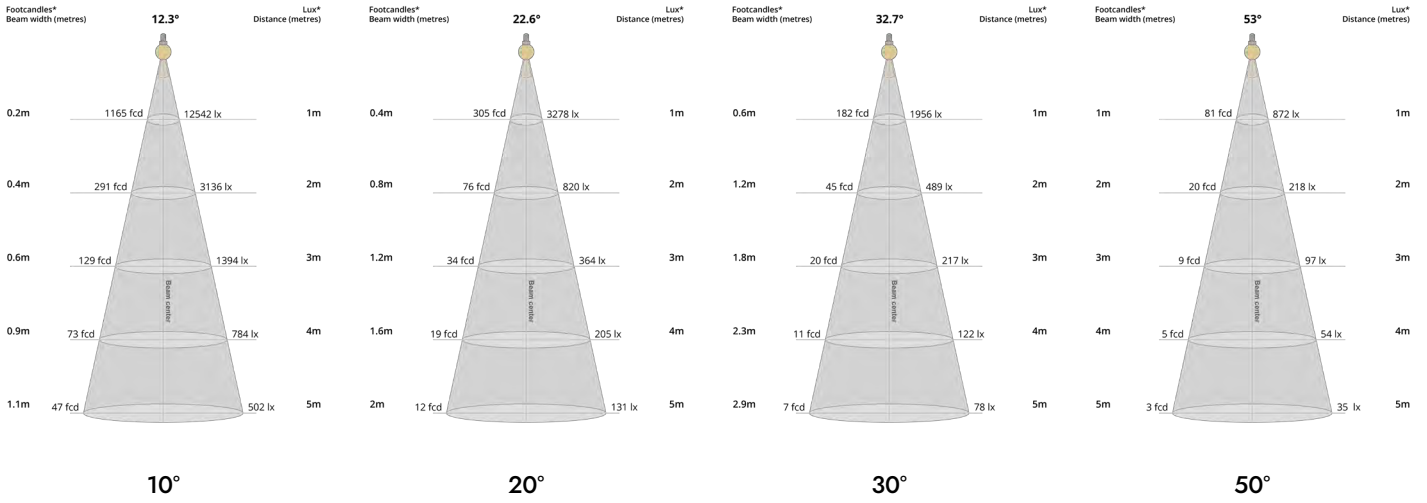
Binning	2 step MacAdams
CRI	90+
TM-30-15	Rg 101 Rf 90
Lumen Maintenance	LM80
Lifetime	50,000 hours

Dimming Options	Mains dim / Non-dim / 0-10V / DALI (dim to dark 0.01%) / Casambi
Flicker Index	0
SVM: (Visual Flicker)	0.02

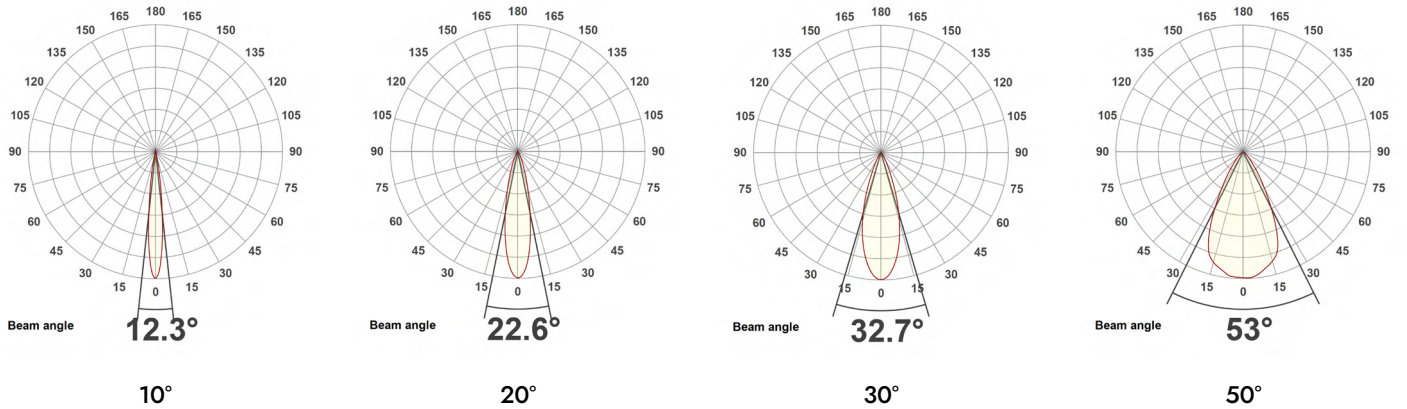
Driver distance from fitting	Up to 10m (AWG 20)*
Wiring Type	Series
Accessories	Remote emergency (Maintained / Self Test)

\*If driver distance from fitting is +10m see driver configurator document for guidance

## LIGHT CONES



## POLAR CURVES



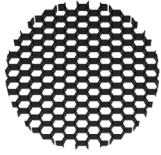
## PARTCODE BUILDER

Example Code: MD-P-WT-STD14-30-90-20-1050

Variant	Family	Bezel Finish	Engine	Power	CCT	CRI	Beam Angle	Driver Current
MD Midi	P Pano	WT White Textured	STD Standard	4 Watts	27 2700K	90	10	350 mA
		B1 Anodised Black		9 Watts				700 mA
		*C Custom		14 Watts				1050 mA

\*Codes for custom finishes can be found on the page 6.

## OPTIC INSERTS (pre-install)



Honeycomb  
HC



Elliptical Insert  
EI



Half Moon  
HM



Opal Insert  
OI

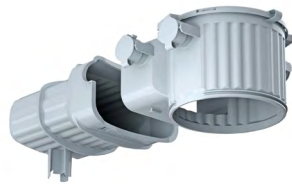


Softening Lens  
SL

## ACCESSORIES



Pano Midi Installation Tube  
ACC-P5-TUBE-ALU



Pano Install Concrete Box  
ACC-HALOX100-190+FRONT

## FINISHES

Every element of your light can be finished in any of the options below:

### PLATED (Interior ONLY)



Antique Bronze  
01



Antique Brass  
02



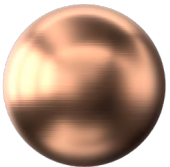
Polished Chrome  
03



Satin Nickel  
04



Polished Copper  
05



Satin Copper  
06

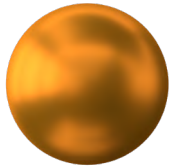


Polished Brass  
09

### ANODISED (Interior ONLY, except Orba Exteriors)



Tuba Brass  
11



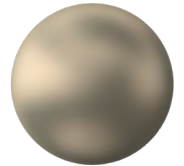
Antique Gold  
12



Espresso Bronze  
13



Cocoa Bronze  
14



Ice Gold  
15



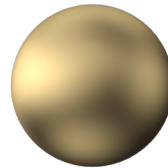
Mocha Bronze  
16



Taupe Bronze  
17



24K Gold  
18



Champagne Gold  
19



Anodised Black (9005)  
B1

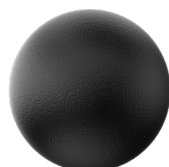
### POWDER COAT (Interior & Exterior)



Pure White (9010)  
W1



Textured White (9010)  
WT



Textured Black (9005)  
BT



RAL Classic  
[www.phos.co.uk/finishes](http://www.phos.co.uk/finishes)



RAL Design  
price on application