



PHOS
ENGINEERING LIGHT

PANO MIDI DARKLIGHT
STANDARD

PANO MIDI DARKLIGHT - STANDARD

The Pano Midi Darklight is a recessed, fixed uplight or wall light with a $\varnothing 54\text{mm}$ minimalist bezel and features an anti-glare baffle for enhanced beam control.

PRODUCT FEATURES

Uplight / Wall Light

Fixed

Interior / Exterior

LED

IP67

Available in all Phos finishes

Interchangeable optics & accessories (pre & post install)

PHOS STANDARDS

60min fire-certified

Acoustic-rated

UK designed, manufactured and assembled

5 year warranty

OPTICS

Standard beam angles:
10° / 20° / 30° / 50°

PHYSICAL PROPERTIES

Diameter $\varnothing 54\text{mm}$

Height 70mm (4W/9W)

Height 95mm (14W)

Cut-out $\varnothing 45\text{mm}$

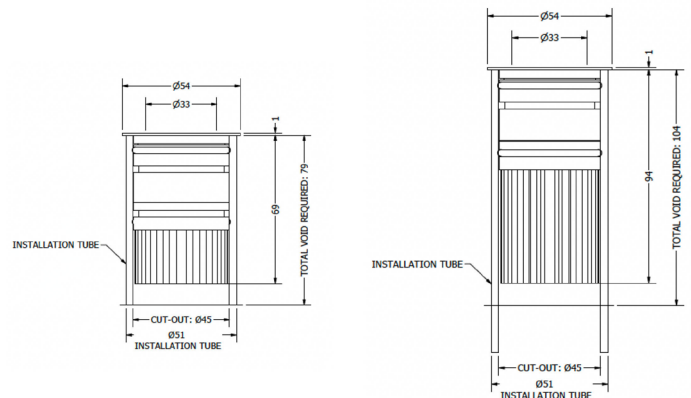
DRIVER INFORMATION

[Driver Configurator \(Link\)](#)

PRODUCT VIEW



DIMENSIONS



4W & 9W

14W

TECHNICAL SPECIFICATIONS

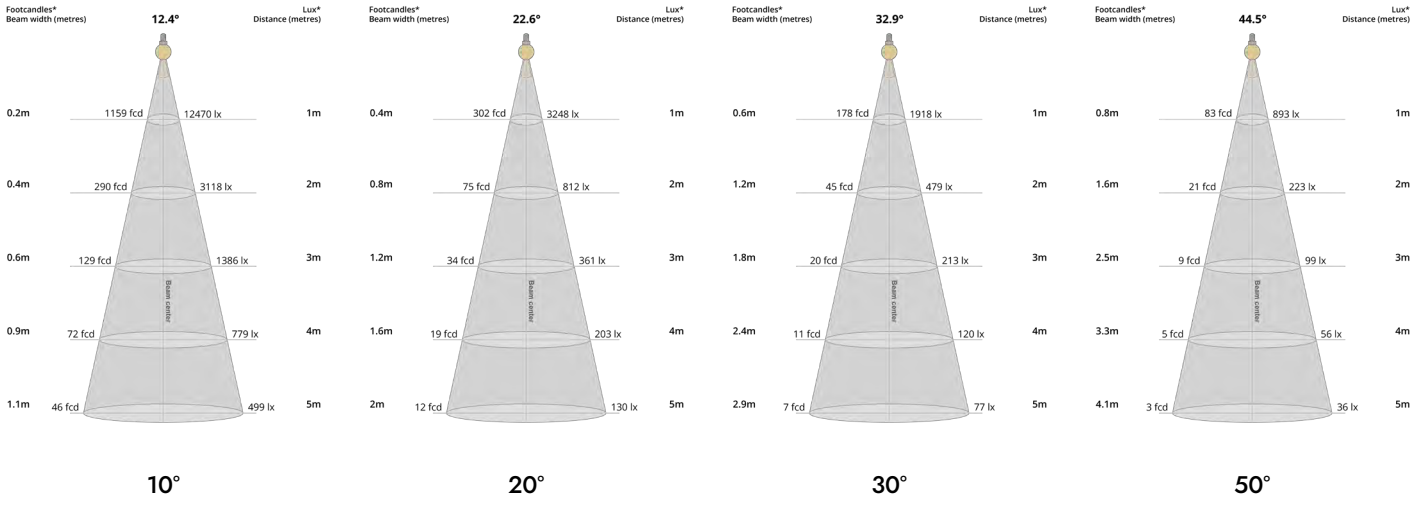
| CCT | 2700K | | | | | | | | | | | |
|---------------------------|-------|------|-----|-----|-------|------|------|------|-------|------|------|------|
| Wattage | 4W | | | | 9W | | | | 14W | | | |
| Beam Angles | 10° | 20° | 30° | 50° | 10° | 20° | 30° | 50° | 10° | 20° | 30° | 50° |
| Luminaire Lumens (lm) | 308 | 259 | 260 | 220 | 504 | 420 | 421 | 365 | 634 | 535 | 531 | 458 |
| Circuit Watts (c/W) | 5.9 | 5.9 | 5.9 | 5.9 | 10.5 | 10.5 | 10.4 | 10.5 | 15.6 | 15.5 | 15.5 | 15.5 |
| Luminaire Efficacy (l/cW) | 52 | 44 | 44 | 37 | 48 | 40 | 40 | 35 | 41 | 34 | 34 | 30 |
| Luminance (Cd) | 5157 | 1199 | 662 | 310 | 8698 | 1963 | 1090 | 514 | 10226 | 3036 | 1847 | 708 |
| Forward Voltage (Vf) | 11.78 | | | | 12.36 | | | | 12.65 | | | |
| Current (mA) | 350 | | | | 700 | | | | 1050 | | | |

| CCT | 3000K | | | | | | | | | | | |
|---------------------------|-------|------|-----|-----|-------|------|------|------|-------|------|------|------|
| Wattage | 4W | | | | 9W | | | | 14W | | | |
| Beam Angles | 10° | 20° | 30° | 50° | 10° | 20° | 30° | 50° | 10° | 20° | 30° | 50° |
| Luminaire Lumens (lm) | 355 | 298 | 293 | 252 | 541 | 441 | 458 | 423 | 786 | 656 | 651 | 523 |
| Circuit Watts (c/W) | 5.9 | 5.9 | 5.9 | 5.9 | 10.5 | 10.5 | 10.5 | 10.4 | 15.8 | 15.8 | 15.8 | 15.7 |
| Luminaire Efficacy (l/cW) | 60 | 51 | 50 | 43 | 52 | 42 | 44 | 41 | 50 | 42 | 41 | 33 |
| Luminance (Cd) | 5255 | 1404 | 804 | 368 | 6409 | 2720 | 1964 | 627 | 12486 | 3253 | 1922 | 893 |
| Forward Voltage (Vf) | 11.78 | | | | 12.36 | | | | 12.65 | | | |
| Current (mA) | 350 | | | | 700 | | | | 1050 | | | |

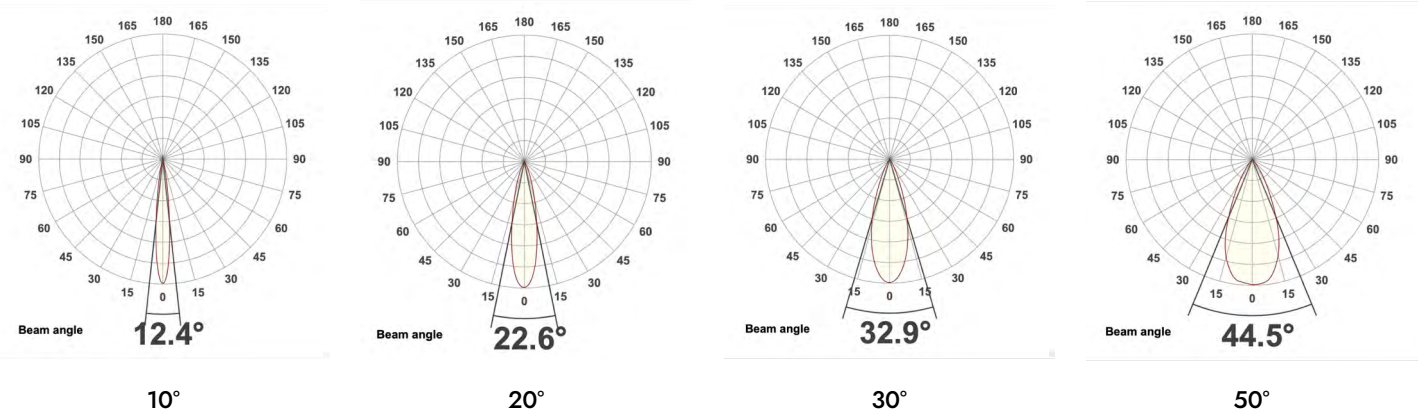
| | | | | | | | | | | | | |
|------------------------------|------------------------------------------------------------------|--|--|--|--|--|--|--|--|--|--|--|
| Binning | 2 step MacAdams | | | | | | | | | | | |
| CRI | 90+ | | | | | | | | | | | |
| TM-30-15 | Rg 101 Rf 90 | | | | | | | | | | | |
| Lumen Maintenance | LM80 | | | | | | | | | | | |
| Lifetime | 50,000 hours | | | | | | | | | | | |
| Dimming Options | Mains dim / Non-dim / 0-10V / DALI (dim to dark 0.01%) / Casambi | | | | | | | | | | | |
| Flicker Index | 0 | | | | | | | | | | | |
| SVM: (Visual Flicker) | 0.02 | | | | | | | | | | | |
| Driver distance from fitting | Up to 10m (AWG 20)* | | | | | | | | | | | |
| Wiring Type | Series | | | | | | | | | | | |
| Accessories | Remote emergency (Maintained / Self Test) | | | | | | | | | | | |

*If driver distance from fitting is +10m see driver configurator document for guidance

LIGHT CONES



POLAR CURVES



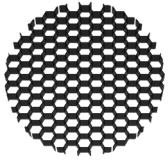
PARTCODE BUILDER

Example Code: MD-PD-WT-STD14-30-90-20-1050

| Variant | Family | Bezel Finish | Engine | Power | CCT | CRI | Beam Angle | Driver Current |
|------------|----------------------|----------------------|-----------------|-------------|-------------|-----|------------|----------------|
| MD Midi | PD Pano Darklight | WT White Textured | STD Standard | 4 Watts | 27 2700K | 90 | 10 | 350 mA |
| | | B1 Anodised Black | | 9 Watts | 30 3000K | | 20 | 700 mA |
| | | *C Custom | | 14 Watts | | | 30 | |
| | | | | | | | 50 | 1050 mA |

*Codes for custom finishes can be found on the page 6.

OPTIC INSERTS (pre-install)



Honeycomb
HC



Elliptical Insert
EI



Half Moon
HM



Opal Insert
OI

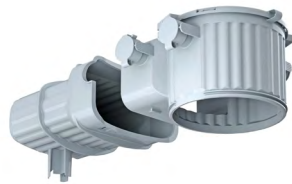


Softening Lens
SL

ACCESSORIES



Pano Midi Installation Tube
ACC-P5-TUBE-ALU



Pano Install Concrete Box
ACC-HALOX100-190+FRONT

FINISHES

Every element of your light can be finished in any of the options below:

PLATED (Interior ONLY)



Antique Bronze
01



Antique Brass
02



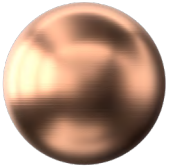
Polished Chrome
03



Satin Nickel
04



Polished Copper
05



Satin Copper
06

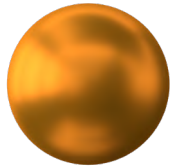


Polished Brass
09

ANODISED (Interior ONLY, except Orba Exteriors)



Tuba Brass
11



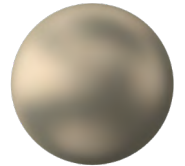
Antique Gold
12



Espresso Bronze
13



Cocoa Bronze
14



Ice Gold
15



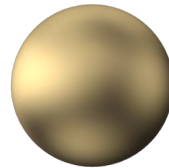
Mocha Bronze
16



Taupe Bronze
17



24K Gold
18



Champagne Gold
19



Anodised Black (9005)
B1

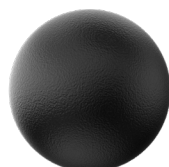
POWDER COAT (Interior & Exterior)



Pure White (9010)
W1



Textured White (9010)
WT



Textured Black (9005)
BT



RAL Classic
www.phos.co.uk/finishes



RAL Design
price on application