



PHOS  
ENGINEERING LIGHT

NANO EYECONIC TRIMLESS ADJUSTABLE  
STANDARD

## NANO EYECONIC TRIMLESS ADJUSTABLE - STANDARD

The Nano Eyeconic Trimless Adjustable is an incredibly discreet recessed, directional downlight with a beautifully sculpted anti-glare baffle and trimless plaster-in frame.

### PRODUCT FEATURES

Downlight

Adjustable

Interior

LED

IP65

Available in all Phos finishes

Interchangeable optics & accessories (pre & post install)

### PHOS STANDARDS

UK designed, manufactured and assembled

5 year warranty

### OPTICS

Standard beam angles:  
20°/ 30°/ 40°/ 55°

### PHYSICAL PROPERTIES

Diameter 60mm

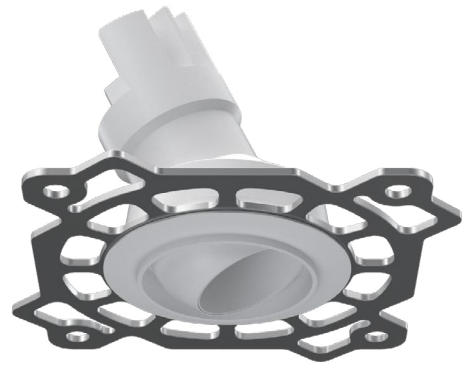
Height 48mm

Cut-out Ø38mm

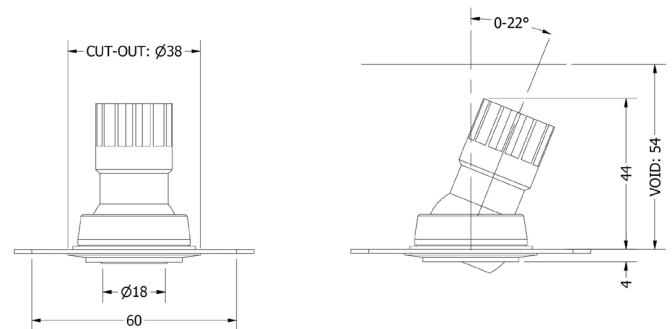
Tilt Max 22°

Rotation 360°

### PRODUCT VIEW



### DIMENSIONS



## TECHNICAL SPECIFICATIONS (Preliminary testing data)

| CCT                       | 2700K |     |      |      |      |     |     |     |
|---------------------------|-------|-----|------|------|------|-----|-----|-----|
| Wattage                   | 1W    |     |      |      | 3W   |     |     |     |
| Beam Angles               | 20°   | 30° | 40°  | 55°  | 20°  | 30° | 40° | 55° |
| Luminaire Lumens (lm)     | 103   | 107 | 77.2 | 83   | 243  | 249 | 192 | 208 |
| Circuit Watts (c/W)       | 2.6   | 2.7 | 2.6  | 2.6  | 5.7  | 5.8 | 5.8 | 5.7 |
| Luminaire Efficacy (l/cW) | 39    | 40  | 30   | 32   | 43   | 43  | 33  | 37  |
| Luminance (Cd)            | 577   | 292 | 126  | 92.5 | 1395 | 717 | 316 | 232 |
| Forward Voltage (Vf)      | 2.78  |     |      |      | 2.97 |     |     |     |
| Current (mA)              | 350   |     |      |      | 1050 |     |     |     |

| CCT                       | 3000K |     |      |      |      |     |     |     |
|---------------------------|-------|-----|------|------|------|-----|-----|-----|
| Wattage                   | 1W    |     |      |      | 3W   |     |     |     |
| Beam Angles               | 20°   | 30° | 40°  | 55°  | 20°  | 30° | 40° | 55° |
| Luminaire Lumens (lm)     | 113   | 115 | 86.2 | 89.8 | 263  | 273 | 209 | 222 |
| Circuit Watts (c/W)       | 2.7   | 2.6 | 2.6  | 2.6  | 5.7  | 5.7 | 5.7 | 5.8 |
| Luminaire Efficacy (l/cW) | 42    | 43  | 33   | 34   | 46   | 48  | 37  | 39  |
| Luminance (Cd)            | 593   | 307 | 138  | 102  | 1443 | 795 | 342 | 252 |
| Forward Voltage (Vf)      | 2.78  |     |      |      | 2.97 |     |     |     |
| Current (mA)              | 350   |     |      |      | 1050 |     |     |     |

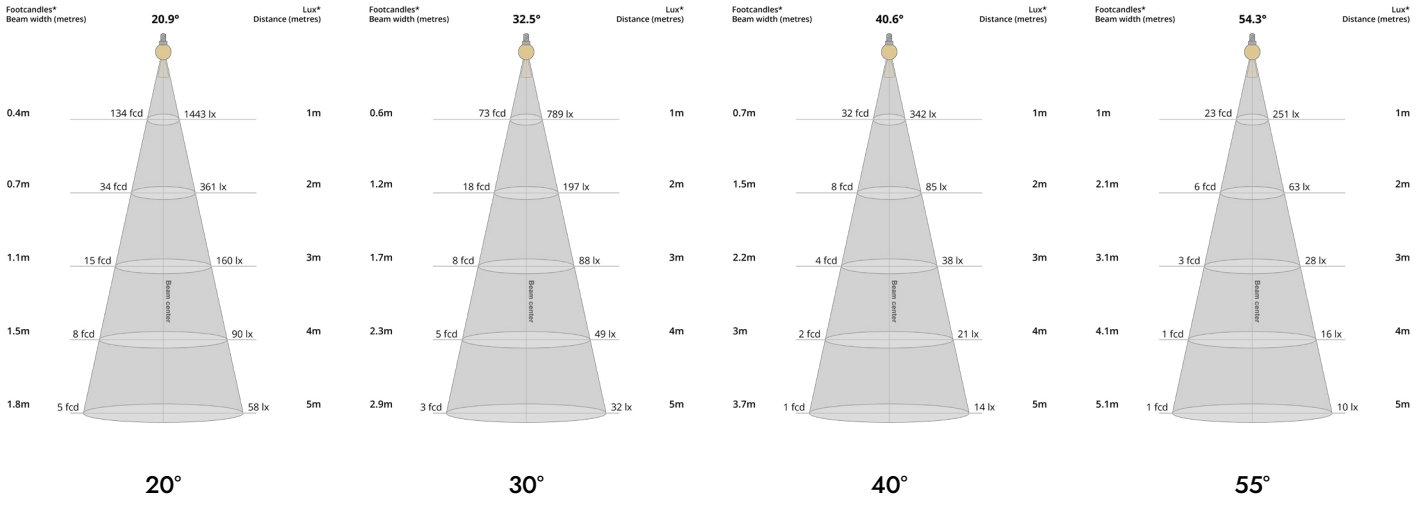
|                   |                   |
|-------------------|-------------------|
| Binning           | 2 step MacAdams   |
| CRI               | 90+               |
| TM-30-15          | Rg 96.87 Rf 91.58 |
| Lumen Maintenance | LM80              |
| Lifetime          | 50,000 hours      |

|                       |  |
|-----------------------|--|
| Dimming Options       | Mains dim / Non-dim / 0-10V / DALI (dim to dark 0.01%) / Casambi |
| Flicker Index         | 0  |
| SVM: (Visual Flicker) | 0.02   |

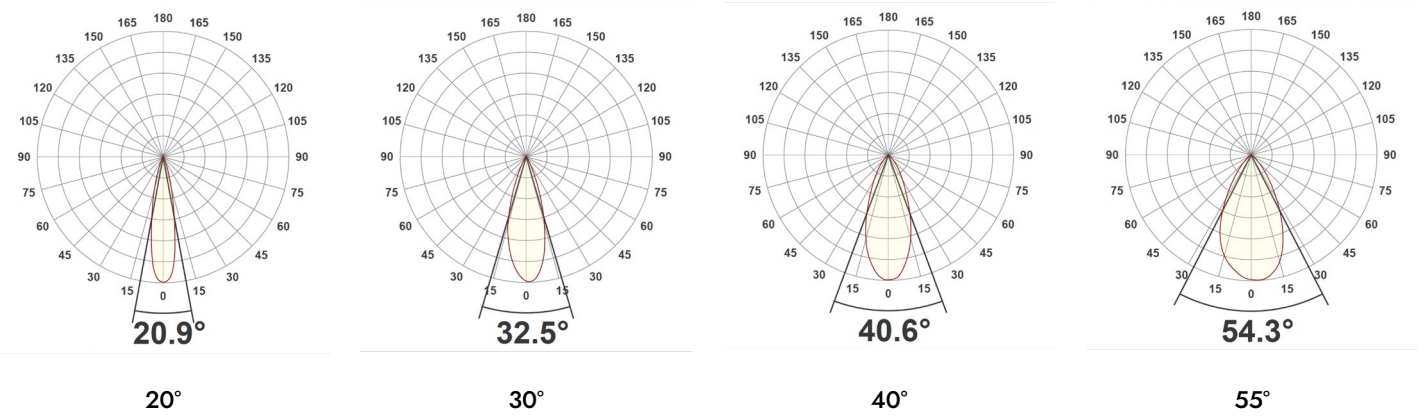
|                              |   |
|------------------------------|---|
| Driver distance from fitting | Up to 10m (AWG 20)*                       |
| Wiring Type                  | Series                                    |
| Accessories                  | Remote emergency (Maintained / Self Test) |

\*If driver distance from fitting is +10m see driver configurator document for guidance

## LIGHT CONES



## POLAR CURVES



## LUMINAIRE PARTCODE BUILDER

Example Code: NA-EY-TA-WT/WT-STD1-30-90-20-350

| Family            | Variant                                      | Outer Baffle Finish         | Inner Baffle Finish         | Engine                 | Power              | CCT                | CRI       | Beam Angle  | Driver Current |
|-------------------|--|-----------------------------|-----------------------------|------------------------|--------------------|--------------------|-----------|-------------|----------------|
| <b>NA</b><br>Nano | <b>EY-TA</b><br>Eyeconic Trimless Adjustable | <b>WT</b><br>White Textured | <b>WT</b><br>White Textured | <b>STD</b><br>Standard | <b>1</b><br>Watts  | <b>27</b><br>2700K | <b>90</b> | <b>20</b>   | <b>350</b>     |
|                   |  | <b>B1</b><br>Anodised Black | <b>B1</b><br>Anodised Black |                        | <b>30</b><br>3000K | <b>30</b>          |           |             |                |
|                   |  | <b>*C</b><br>Custom         | <b>*C</b><br>Custom         |                        | <b>3</b><br>Watts  | <b>55</b>          |           | <b>1050</b> |                |

## FRAME PARTCODE BUILDER

Example Code: NA-TFR-WT

| NA                | Variant                      | Frame Finish  |
|-------------------|------------------------------|---|
| <b>NA</b><br>Nano | <b>TFR</b><br>Trimless Frame | <b>WT</b><br>Textured White<br><br><b>B2</b><br>Black |

\*Codes for custom finishes can be found on the page 7.

**ACCESSORIES** (multiple inserts available per fitting)



Commissioning Tool (Plastic)  
ACCS-TOOL-P-BAFFLE



SNOOT  
ACCS-SNOOT



Honeycomb Recessed  
ACCS-RECESSED-HCOMB



Honeycomb Flush  
ACCS-FLUSH-HCOMB



Softening Insert Recessed  
ACCS-RECESSED-SOFT



Softening Insert Flush  
ACCS-FLUSH-SOFT



Opal Insert Recessed  
ACCS-RECESSED-OPAL



Opal Insert Flush  
ACCS-FLUSH-OPAL



Elliptical Insert Recessed  
ACCS-RECESSED-10X60ELLIPTICAL



Elliptical Insert Flush  
ACCS-FLUSH-10X60ELLIPTICAL



Colour Change Insert Recessed  
ACCS-RECESSED-FILTER18K  
ACCS-RECESSED-FILTER22K  
ACCS-RECESSED-FILTER24K  
ACCS-RECESSED-FILTER25K



Colour Change Insert Flush  
ACCS-FLUSH-FILTER18K  
ACCS-FLUSH-FILTER22K  
ACCS-FLUSH-FILTER24K  
ACCS-FLUSH-FILTER25K

## FINISHES

Every element of your light can be finished in any of the options below:

### PLATED (Interior ONLY)



Antique Bronze  
01



Antique Brass  
02



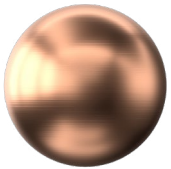
Polished Chrome  
03



Satin Nickel  
04



Polished Copper  
05



Satin Copper  
06

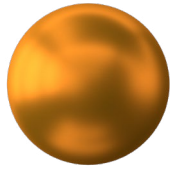


Polished Brass  
09

### ANODISED (Interior ONLY, except Orba Exteriors)



Tuba Brass  
11



Antique Gold  
12



Espresso Bronze  
13



Cocoa Bronze  
14



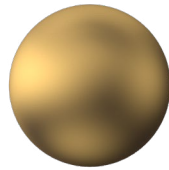
Ice Gold  
15



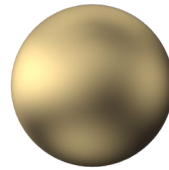
Mocha Bronze  
16



Taupe Bronze  
17



24K Gold  
18



Champagne Gold  
19



Anodised Black (9005)  
B1

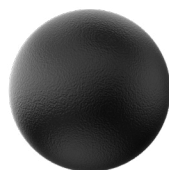
### POWDER COAT (Interior & Exterior)



Pure White (9010)  
W1



Textured White (9010)  
WT



Textured Black (9005)  
BT



RAL Classic  
[www.phos.co.uk/finishes](http://www.phos.co.uk/finishes)



RAL Design  
price on application